

## INSERTO BACK CONCO

This Technical Sheet is to be intended as an integral section of the Inserto Back Range Instruction Manual. Before use, it is essential for the professional user to explain all procedures for a correct commissioning and a proper standard maintenance.

### 1. Commissioning

The CONCO backrest of the Inserto Back Range is the evolution of the INSERTO SEAT concept. Its high versatility and adaptability offers to the end user the best performances of customisation as well as confort, lightness and protection.

The **Inserto Back Conco** Trunk Positioning solution of the **INSERTO BACK** Range comes as follows:

- 1) structural kit composed of a flat base of construction and 16 polyethylene closed celled inserts, modular and modifiable, useful to individually support or correct the posture of the trunk during the lifetime use
- 2) padding available in a single layer of polyurethane elastic foam or memory foam
- 3) microclimatic ventilated cover, fireproof and antibacterial
- 4) multi-tension strap system with H 5cm single straps or with H 10cm central double strap and H 5cm single straps for installation on the wheelchair (if the device is chosen without the multi-tension system, it must be mounted on a string/canvas support with gripping system)



### 2. Use

The **Inserto Conco** Trunk Positioning System is recommended preferably, but not exhaustively, for:

- those with high risk of spinal pressure injuries
- those who need to unload the spine and to embrace gibbous and protrusions
- those who use it in combination with orthosis for the rachis.

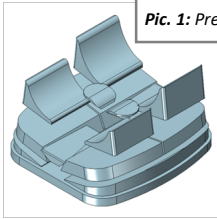
The special feature of this backrest is the total absence of a metal shell and hardware for installation.



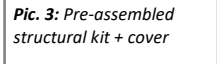
*Once the modifications have been completed, such as removals, for the preparation and configuration as per prescription of the positioning system individually customised to the perfect reconstruction of the anatomic shape, the positioning system itself cannot be used by other users.*

The **Inserto Back Conco** Positioning System, in its design integrity and numerical and dimensional completeness of the supplied components (structural kit, padding kit, cover), can be easily adapted to sizes/morphologies/deformities of the user. This kind of operations make the commissioning **referable to a serial manufacturing device**.

Alternatively, the commissioning of the **Inserto Back Conco** Positioning System, deprived or modified, even partially, of its design integrity of numerical and dimensional completeness of the supplied components, built as per written prescription of a professional user in function of the anatomy/morphologies/deformities of the end user, through the measurement detection and direct trials, can be **referable to a custom-made device**.



Pic. 1: Pre-assembled structural kit

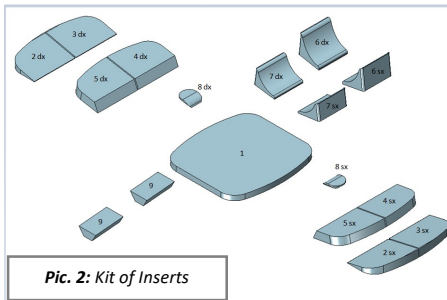


Pic. 3: Pre-assembled structural kit + cover



## Inserto Conco

16 MODULAR AND CONFIGURABLE INSERTS



Pic. 2: Kit of Inserts

- 01) rigid flat base of construction
- 02) semirigid lower lateral contouring insert
- 03) semirigid upper lateral contouring insert
- 04) semirigid upper lateral insert to house the protrusion
- 05) semirigid lower lateral insert to house the protrusion
- 06) semirigid "higher size" insert for the lumbar contouring support
- 07) semirigid "shorter size" insert for the lumbar contouring support
- 08) semirigid lumbar support insert
- 09) semirigid insert for the protrusion location

The structural kit of **Inserto Conco** is composed by a flat base of construction and numerous inserts that can be customised, shaped, modified as needed (Pic.1 and Pic.2). Each element of the structural kit is supplied with male/female hooks and loops tape that strongly fix the inserts to the flat base of construction. The preparation of the trunk positioning system shape, based on the prescription and the end user's anatomy and morphology, is done through the detection of measurement and direct trials, therefore it has to be carried out as follows in order to ensure the proper commissioning.

The following **fundamental** instructions must be followed when installing the device:

### 1) Check the diameter of the wheelchair tubes

The fastening system to the backrest canes (pic 4), allows the backrest to be mounted on tubes of different diameters without using particular adaptation means.



Pic. 4: Fastening system



*Proceed with the mounting once verified the compatibility of the backrest with the wheelchair tubes and with the width of the wheelchair. It is recommended to mount the backrest without the end user seated on the wheelchair.*

### 2) Mounting the backrest to the wheelchair and adapting it to the user's trunk

Before using the Device ensure the Professional User explains the procedures for correct commissioning and standard maintenance. For further information, please contact the Professional User.

Proceed as follows:

- remove the hook systems from the end of the straps on the back of the backrest

- remove the adhesive film from the hook and loop systems and stick them on the wheelchair tubes pic 5.1 and pic 5.2 (check for the height where the backrest should be positioned)
- position the multi-tension straps on the tubes by placing the male hook system of the end of the strap on the female hook system which is glued to the tubes and close with the other strap on the tube, forming a ring as in pic 5.1 and pic 5.2 (this operation should be repeated for all the ends of the straps)



Pic. 5.1: Mounting on the wheelchair



Pic. 5.2: Mounting example on tubes

- To adapt the **Conco** backrest to the user's trunk, please, perform as follows:
  1. remove the padding
  2. after the detection of measurements, position the kit of inserts by choosing the most suitable ones to the user's rachis conformation
  3. place the backrest on the multi-tension strap system previously installed, prepare the backrest by positioning the user in order to check the inserts have been correctly positioned
  4. cover the structural kit with padding and cover
  5. make sure that the straps are properly tightened and adjusted to better accommodate the user's trunk



*It is strongly recommended to periodically check the skin of the user in order to verify any risk of redness appearance.*

Once the backrest is settled, please, proceed with the final installation on the wheelchair

- place the backrest with the two outer straps of the cover opened on the multi-tension strap system making sure that the hook system on the back of the cover adheres completely to the hook system on the multi-tension system
- cover everything with the two outer straps of the cover located on the back of the backrest by overlapping them through the hook-and-loop system, as shown in figure (pic 6).
- make sure the user's trunk is correctly aligned.



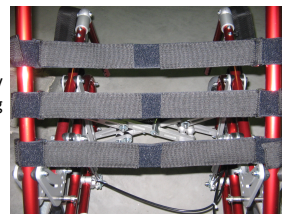
Pic. 6: Closure of the two outer straps of the cover



*If the device is not chosen with the multi-tension straps supplied by Pro Medicare, make sure the positioning system can be mounted on the wheelchair. The backrest posterior part comes with a gripping system fabric pad, which is used to hold the two outer straps of the cover together when the canvas or strap system, already on the wheelchair, exceeds in height with respect to the backrest height.*

### 3) Backrest depth/tilt adjustment

To adjust the depth/tilt, loosen the straps mounted on the wheelchair tubes (pic 7) by sliding them through the rings at the ends; then reposition the straps by overlapping the male hook system with the female hook system.



Pic. 7: Straps adjustment

### 4) Removal of the backrest from the wheelchair

For the removal of the backrest it is necessary to lift the two outer straps of the cover and pull the backrest toward you, paying attention to the gripping systems.

### 3. Suggestions related to some operations

#### 3.1 Positioning the gripping Tape

If it is necessary to replace or add the gripping hook and loops tape on one or more inserts of the structural kit, please use the extra tape supplied in the packaging.

To do this operate as follows: remove the adhesive film and stick the tape firmly on the insert to attach. Therefore, check for the correct placement. If it is correct, please remove the tape, taking care to heat the adhesive part for few seconds by using an industrial hot hair dryer at temperature of around 100° (212°F), then reposition the tape definitely.



*Be careful not to damage the materials during this operation*

#### 3.2 Modifying the structural kit Inserts

Modifications to reduce inserts by removing material, where necessary, can be carried out using a cutter.

If it is necessary to rebuild the modified component (where the material removed makes it possible), use an industrial hot air dryer at a temperature of around 100 ° (212°F) to heat and weld together the two parts to be assembled.



*Be careful not to damage the materials during this operation*

- 1) accurately detect the measurements of the end user and of his wheelchair/mobility device
- 2) remove the cover
- 3) remove the padding
- 4) dispose the contouring inserts (2dx/sx-3dx/sx), protrusion host inserts (4dx/sx-5dx/sx) and the inserts (6dx/sx-7dx/sx) on the flat base of construction(1) in order to match the thorax width with the distance between the inserts positioned on the flat base; in particular, the inserts (4dx/sx-5dx/sx) and the other two inserts (9) will be used to embrace gibbous and rachis protrusions.

The combination of the inserts may be different for the right hand side and the left hand side.

It should be noted that the function of the flat base of construction (1) is to provide a supporting base between the wheelchair/mobility device, as well as the primary structure of the construction kit on which to build or adapt the positioning system by using, removing or modifying, as necessary and as required by the prescription, all other inserts supplied with the construction kit.

#### Indications for the width of the backrest

The desired width of the backrest can be achieved by positioning the inserts (2dx/sx -3dx/sx-4dx/sx-5dx/sx) on the flat base of construction (1). If it is necessary to increase the width of the backrest, the inserts must be positioned 1-1.5 cm wider on each side, but not too wide in relation to the inner width of the wheelchair tubes.

If it is necessary to reduce the width of the backrest, after checking the suitability on the wheelchair, you can remove small portion by using a cutter, cutting a maximum of 1-1.5 cm per side, making sure that the backrest does not become too small compared to the width of the wheelchair.



*It is always recommended to position the backrest between the wheelchair tubes and to ensure that the gap between the backrest ends, already upholstered, and the wheelchair tubes is no more than two centimetres on each side in order to be sure the backrest located between tubes doesn't move.*

#### Indications for the height of the backrest

The desired height of the backrest can be achieved by positioning 1-1,5 cm wider on each side the inserts (2dx/sx -3dx/sx-4dx/sx-5dx/sx) on the flat base of construction. If it is necessary to reduce the height of the backrest, after checking the suitability on the wheelchair, you can remove small portion by using a cutter, cutting a maximum of 1-1.5 cm per side



*After having performed any inserts removal or modifications it is necessary to place the padding and the cover. After each operation it is essential and mandatory to check that the backrest is correctly positioned on the straps. It is mandatory to periodically check (every two weeks) the condition of the straps and fastening systems seams. The backrest is not suitable for vehicle transportation.*

### 4. Maintenance and cleaning

In order to avoid the development of infections, it is recommended to perform a careful cleaning every 2 weeks and/or, if needed, check the trunk positioning system in all its parts by avoiding malfunctions. In order to guarantee a good functioning and long lasting performances in safe conditions it is necessary to check regularly and make periodically maintenance to ensure

that no sores due to excessive pressure have been developed. This operation must be performed by the end user. The regular maintenance consists of two parts: cleaning and straps checking.

**- Cleaning -**

Regarding the removable cover of the backrest, it can be washed in tepid water at max 30° with the addition of a light, not aggressive detergent, bleach free. Then dry away from heat sources. The padding, even if it is not in direct contact with the user's skin, in order to avoid infections can be simply cleaned with a damp cloth or a brush with natural bristles (do not clean with water).

**-Straps checking -**

The operations to perform are the following:

- \* Every two weeks check the conditions of the straps and fastening systems seams
- \* Checking the adjustments: it is recommended to respect the checking plan scheduled with the professional user to check all adjustments and settings

For further information, please contact our technical-Sales Department at the following number:



The product technical sheet is an integral part of the instruction manual.

You can find below the size table of the Inserto Back Conco

**TECHNICAL FEATURES**

Size (cm)	2415	2421	2815	2821	3215	3221	3227	3618	3624	3630	4018	4024	4030
width. x height	24x15	24x21	28x15	28x21	32x15	32x21	32x27	36x18	36x24	36x30	40x18	40x24	40x30
Effective wheelchair external tubes width	24-26	24-26	28-30	28-30	32-34	32-34	32-34	36-38	36-38	36-38	40-42	40-42	40-42
Effective shell width	19	19	23	23	27	27	27	31	31	31	35	35	35
Effective shell height	15	21	15	21	15	21	27	18	24	30	18	24	30



*Any operation of removal, preparation or adjustment for the specific user, on the basis of a prescription, have to be performed by a professional operator and those interventions get the device customised. The professional user has the charge and the responsibility to guarantee the efficacy and the performances of the device.*

**MANUFACTURED BY:**



**Pro Medicare S.r.l.**

Via Montagna Z.I. - Lotto 41 72023 Mesagne (BR) - ITALY

Tel. +(39) 0831 777840 - Fax. +(39) 0831 730739 -

Email: [sales@promedicare.it](mailto:sales@promedicare.it) - [www.promedicare.eu](http://www.promedicare.eu)